

FEATURES

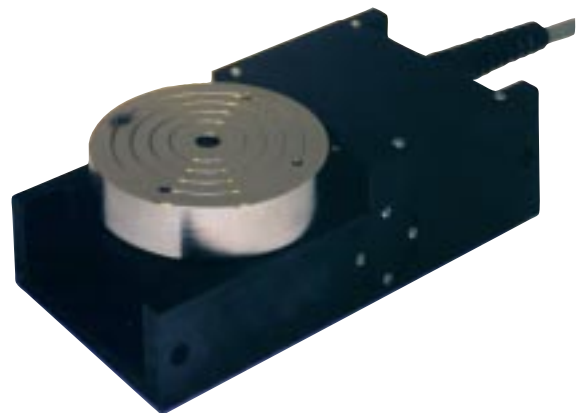
- Welded steel machine base with powder-coated finish for durability
- Leveling feet to assure horizontal table top
- 3" x 2" heavy steel tubing construction for rigidity

Gantry Model	Catalog Number	W	L	H
015	HX3500-015E	36-1/4	24-3/4	32
027	HX3500-027E	46-1/16	34-1/8	32
040	HX3500-040E	46-1/16	44	32
054	HX3500-054E	46-1/16	53-3/4	32
067	HX3500-067E	50-3/16	53-3/4	32
130	HX3500-130E	60-1/32	70	32

Programmable Rotary Table

FEATURES

- Very high load capacity
- Versatile mounting surfaces
- Worm gear drive for improved accuracy with less backlash
- Stepper/servo motor drives
- Compact space saving footprint



CATALOG NUMBERS

Rotary Table Only:

HS3600□15877RT

- └ M Stepper
- └ R Servo

Rotary Table System Set:

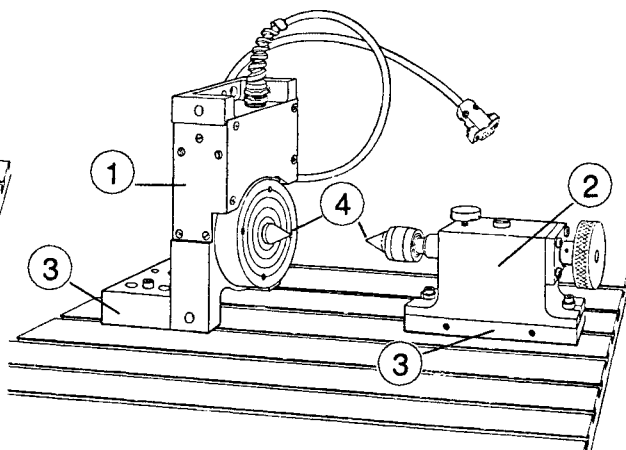
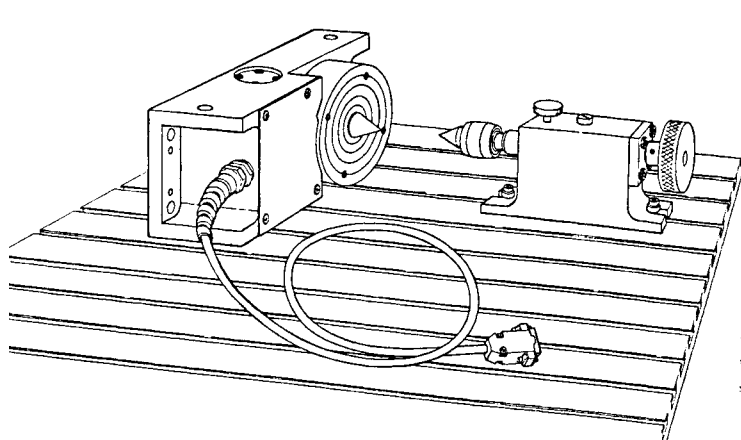
HX36□0M15877

- └ S Stepper
- └ V Servo

Set comes complete with:

- HS3600M15877TS** – Tailstock
- H20C17-303P** – Servo Amplifier Card (servo set only)
- H90Z15-LM628** – Techno Servo Card 4th Axis chip upgrade
- HX1700M1025** – 25 ft. Motor/Encoder Cable (servo set only)
- HS5600M15877** – Center Set
- HS6100M15877MS** – Rotary Table Vertical Mounting Bracket Set
- H20K16-SD15A** – Stepper Amplifier Card (stepper set only)
- HX1700M2029** – Stepper Motor Cable (DB9 to DB9)

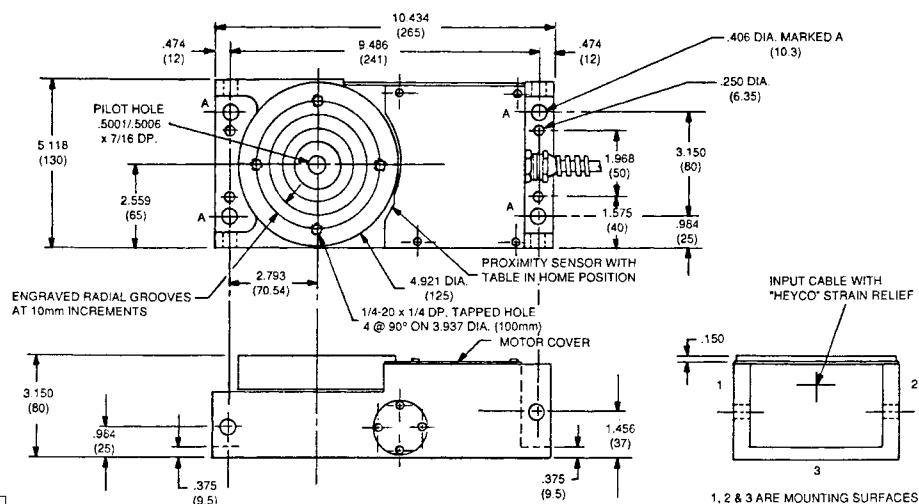
Programmable Rotary Table



① Programmable Rotary Positioning Table **HS3600M15877RT**
 HS3600M15877TS

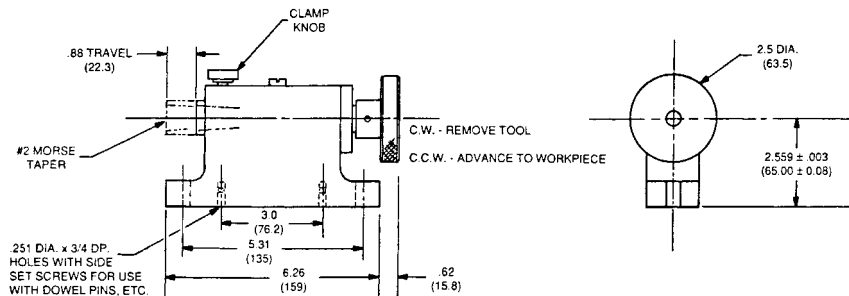
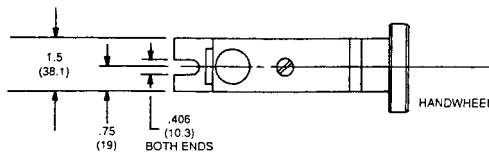
③ Vertical Mounting Bracket Set **HS6100M15877MS**
 HS5600M15877

Mounting Examples



Rotary Table Dimensions

Specifications	
Table Diameter (mm)	125
Table Height (mm)	80
Table Center Height (mm)	65
Center Hole	
Diameter (in)	.5001/.5006
Depth (in)	.437
Maximum Speed (deg/sec)	60
Resolution (sec)	33
Maximum Torque (N•cm)	1340
Load Capacity	
Horizontal (kg)	1000
Vertical (kg)	500
Clamping Torque (N•cm)	6000
Homing Accuracy (sec)	±33
Repeatability (sec)	±3.4
Flatness (mm)	0.005TIR
Concentricity (mm)	0.018TIR
Weight (kg)	6.4



Tailstock Dimensions