



Series 2 Double Rails

FEATURES

- Guide rails consist of two precision ground $\varnothing 12$ mm steel shafts, with M5 threaded holes spaced 100 mm apart. Shaft is hardened to RC 62 \pm 2
- The two shafts are pulled together by the support block design, ensuring they are parallel to $\leq .02$ mm / 1 m and easy assembly
- The aluminum support blocks have two holes spaced 28 mm apart for easy mounting
- The support blocks can be set at increments of 100 mm depending on the size of the load
- Extremely low cost
- Can use Roller Carriage 2, Bearing Carriage WS4 or Bearing Carriage 4
- The steel shafts can be staggered and built up to provide virtually any length of travel
- Note that the individual shafts and mounting blocks are sold separately
- Maximum linear speeds of up to 10 m/sec
- Example of Rail Assembly (as shown in picture below) requires: 2 - HL5727M3120500 and 5 - HL5400M221501

* This *isel* Linear System is patented.

Tapped Shaft

Length mm	Catalog Number
400	HL5727M3120400
500	HL5727M3120500
600	HL5727M3120600
700	HL5727M3120700
800	HL5727M3120800
900	HL5727M3120900
1000	HL5727M3121000
1100	HL5727M3121100
1200	HL5727M3121200
1300	HL5727M3121300
1400	HL5727M3121400
1500	HL5727M3121500
1800	HL5727M3121800
2000	HL5727M3122000
2500	HL5727M3122500
3000	HL5727M3123000

Mounting Block

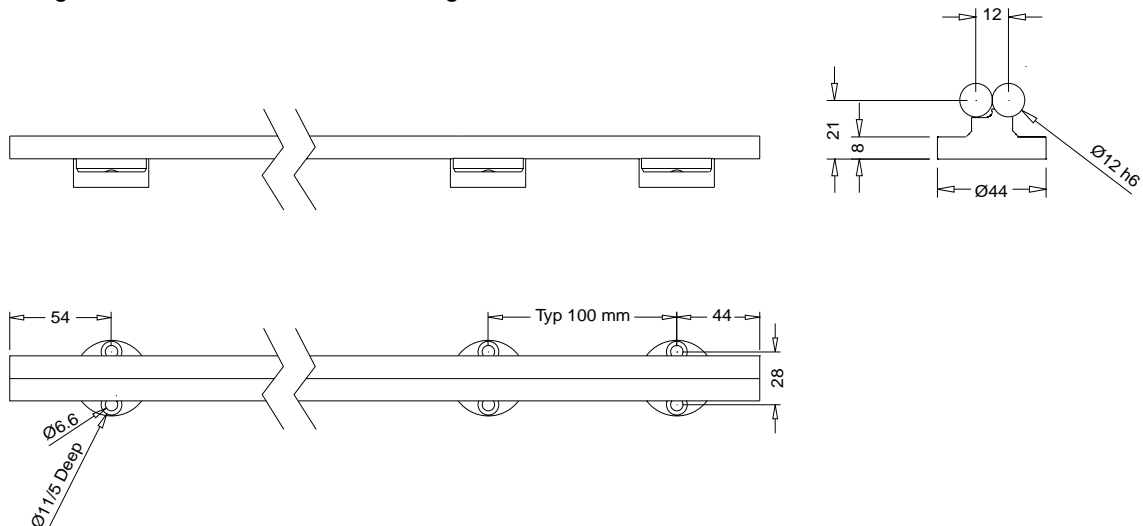
Catalog Number
HL5400M221501



Requires: (as shown)
 (2) HL5727M3120500 and
 (5) HL5400M221501

NOTE: Mounting screws for steel shaft are included with block.

NOTE: Actual length is 2 mm less than nominal length.





Series 2 Compatible Carriages

Roller Carriage 2*

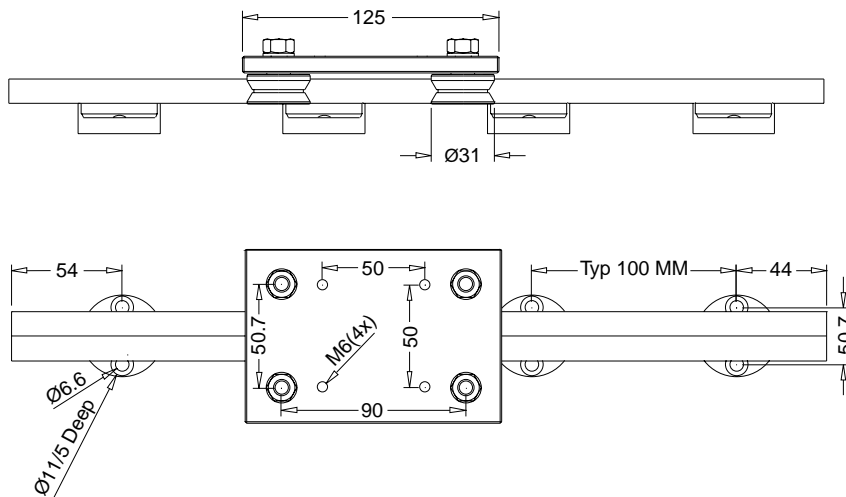
FEATURES

- For use with Series 2 and 200 Double Rail
- Factory preloaded with two rollers that have eccentric mounting to allow for easy preload and clearance adjustment
- Four precision rollers, Ø31 mm on each plate. Each roller has two sealed bearings, lubricated for life, for minimal maintenance
- Consists of a ground and hardened steel plate 125 x 97 x 8 mm with four M6 threaded holes on a 50 mm grid for easy mounting
- Rollers are available separately for OEM applications, see page 47
- Travel at up to 10 m/sec, with ultraquiet operation

* This *isel* Linear System is patented.



ROLLER CARRIAGE 2: HL46D0M223008



Maximum Load (N)

	F _z	F _y
Static	2800	2600
Dynamic	1400	1300

Maximum Moment (N·m)

	M _x	M _y	M _z
Static	73	125	65
Dynamic	38	60	32

For information on individual rollers, please see page 47



Series 2 Compatible Carriages

Bearing Carriage WS4*

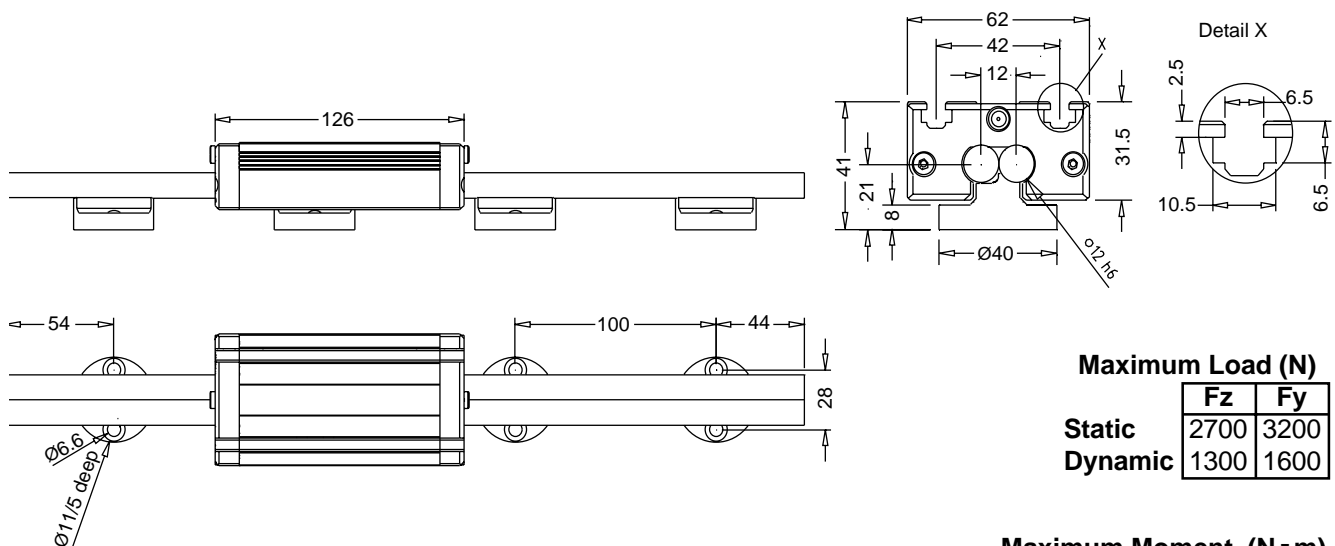
FEATURES

- Carriage consists of milled aluminum block with steel core for a low cost yet durable bearing
- Ø3.5 mm ball bearings incorporated into four recirculating raceways
- Balls ride on steel core, this provides travel at up to 5 m/sec
- 2 T-slots on top surface for mounting of M6 screws or nuts
- Complete with wipers and lubrication ports
- Compatible with the Series 2 Double Rail, Series 200, 400 and 500 Double Rail Systems

* This *isel* Linear System is patented.



BEARING CARRIAGE WS4: HL46D0M223104



Maximum Load (N)

	Fz	Fy
Static	2700	3200
Dynamic	1300	1600

Maximum Moment (N·m)

	Mx	My	Mz
Static	29	100	120
Dynamic	14	51	60