



Series 200 Double Rails*

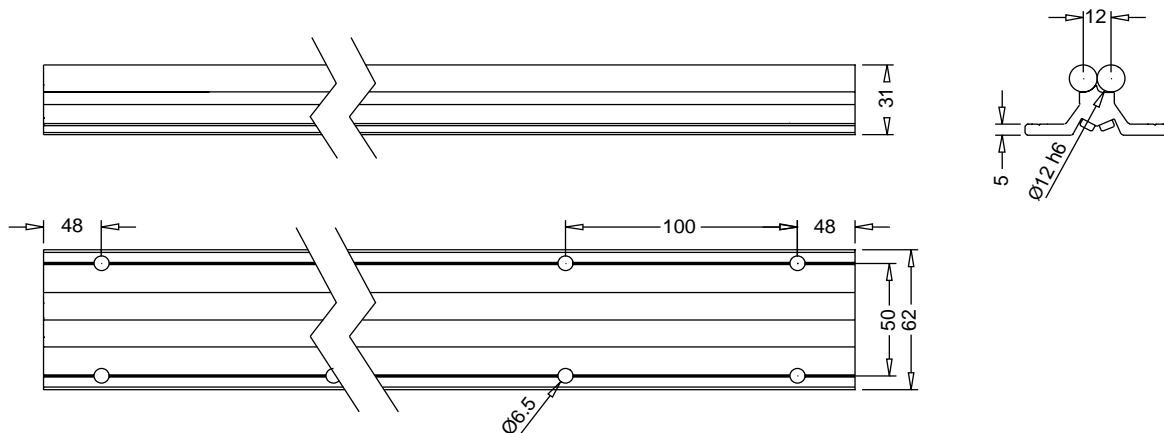
FEATURES

- Guide Rails are fully supported uniformly throughout travel range on clear anodized aluminum support profile
- Steel shafts are connected and tightened against each other by M5 screws. This produces a precise and rigid rail system ideal for most Linear Motion applications
- Guide Rails and Support Profile are sold as assembly in a variety of lengths
- Guide rails consist of two precision ground $\text{\O}12$ mm Cf53 steel shafts, hardened to RC 62 + 2, with M5 threads on 100 mm centers
- Aluminum support profile has pairs of mounting holes at 100 mm intervals down the length of the rail system. Each pair of holes is 50 mm apart for easy mounting to our aluminum extrusions (shown in the 'aluminum extrusion' section)

* This *isel* Linear System is patented.

| Length mm | Catalog Number |
|-----------|----------------|
| 400 | HL4235M2000400 |
| 500 | HL4235M2000500 |
| 600 | HL4235M2000600 |
| 700 | HL4235M2000700 |
| 800 | HL4235M2000800 |
| 900 | HL4235M2000900 |
| 1000 | HL4235M2001000 |
| 1100 | HL4235M2001100 |
| 1200 | HL4235M2001200 |
| 1300 | HL4235M2001300 |
| 1400 | HL4235M2001400 |
| 1500 | HL4235M2001500 |
| 1800 | HL4235M2001800 |
| 2000 | HL4235M2002000 |
| 2500 | HL4235M2002500 |
| 3000 | HL4235M2003000 |

NOTE: Actual length is 2 mm less than nominal length.





Series 200 Compatible Carriages

Roller Carriage 2*

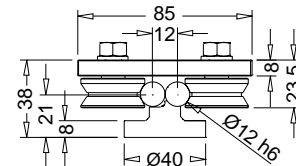
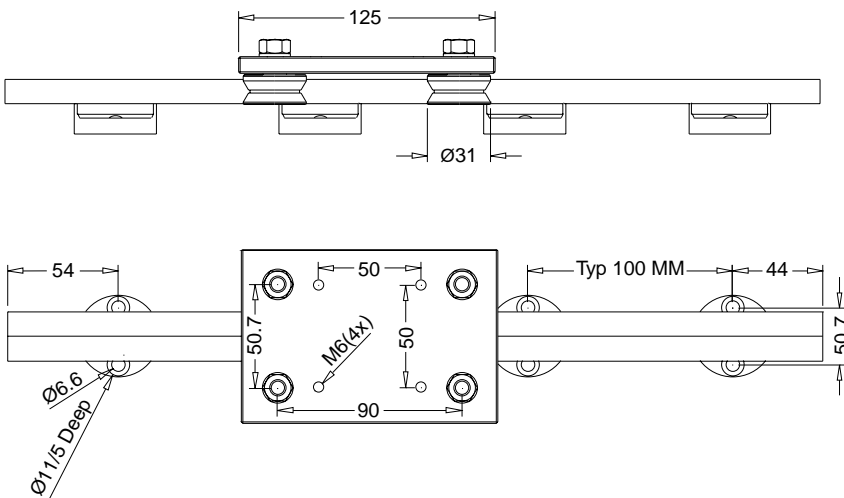
FEATURES

- For use with Series 2 and 200 Double Rail
- Factory preloaded with two rollers that have eccentric mounting to allow for easy preload and clearance adjustment
- Four precision rollers, Ø31 mm on each plate. Each roller has two sealed bearings, lubricated for life, for minimal maintenance
- Consists of a ground and hardened steel plate 125 x 97 x 8 mm with four M6 threaded holes on a 50 mm grid for easy mounting
- Rollers are available separately for OEM applications, see page 47
- Travel at up to 10 m/sec, with ultraquiet operation

* This *isel* Linear System is patented.



ROLLER CARRIAGE 2: HL46D0M223008



Maximum Load (N)

| | F _z | F _y |
|---------|----------------|----------------|
| Static | 2800 | 2600 |
| Dynamic | 1400 | 1300 |

Maximum Moment (N·m)

| | M _x | M _y | M _z |
|---------|----------------|----------------|----------------|
| Static | 73 | 125 | 65 |
| Dynamic | 38 | 60 | 32 |

For information on individual rollers, please see page 47



Series 200 Compatible Carriages

Bearing Carriage WS4*

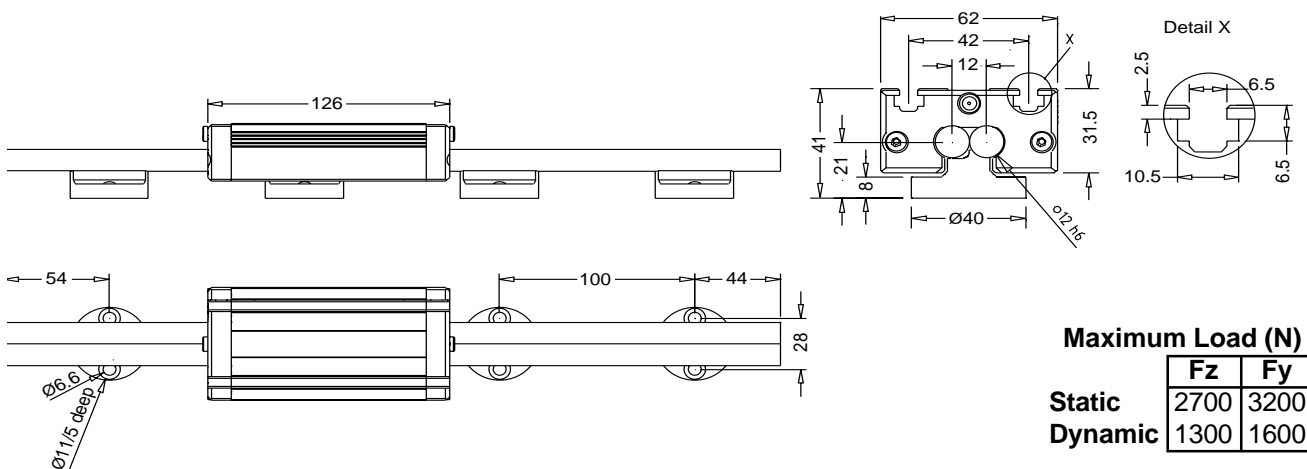
FEATURES

- Carriage consists of milled aluminum block with steel core for a low cost yet durable bearing
- $\varnothing 3.5$ mm ball bearings incorporated into four recirculating raceways
- Balls ride on steel core, this provides travel at up to 5 m/sec
- 2 T-slots on top surface for mounting of M6 screws or nuts
- Complete with wipers and lubrication ports
- Compatible with the Series 2 Double Rail, Series 200, 400 and 500 Double Rail Systems

* This *isel* Linear System is patented.



BEARING CARRIAGE WS4: HL46D0M223104



Maximum Load (N)

| | Fz | Fy |
|---------|------|------|
| Static | 2700 | 3200 |
| Dynamic | 1300 | 1600 |

Maximum Moment (N · m)

| | Mx | My | Mz |
|---------|----|-----|-----|
| Static | 29 | 100 | 120 |
| Dynamic | 14 | 51 | 60 |