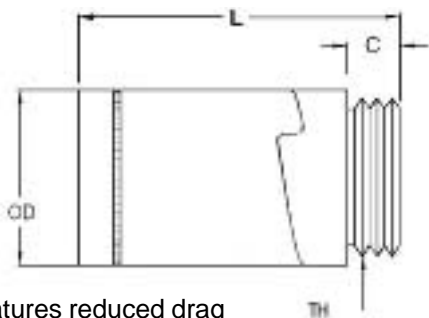




Advanced Anti-Backlash SUPERNUTS™



- Features reduced drag



ADVANCED ANTI-BACKLASH SUPERNUTS™

MATERIAL: Acetal with PTFE

TEMPERATURE RANGE: Min. 32°F, Max. 180°F

All dimensions are expressed in inches, unless otherwise noted.

INCH

Catalog Number	Screw Size O.D. - # Thds. - Starts	Lead	Efficiency %	Nut Dimensions			TH	Design Load	Drag Torque (oz-in)	Flange HB250F-
				OD	L	C				
HB27SN-25161AB	1/4 - 16 - 1st	.063	48	.64	1.18 (max)	.187	9/16-18	10 lbs	< 1	025
HB27SN-25201AB	1/4 - 20 - 1st	.050	41							
HB27SN-31082AB	5/16 - 08 - 2st	.125	65	.82	1.875 (max)	.25	5/8 - 18	25 lbs	1 - 3	037
HB27SN-31084AB	5/16 - 08 - 4st	.500	80							
HB27SN-31122AB	5/16 - 12 - 2st	.167	72							
HB27SN-37045AB	3/8 - 04 - 5st	1.200	82							
HB27SN-37055AB	3/8 - 05 - 5st	1.000	82							
HB27SN-37081AB	3/8 - 08 - 1st	.125	53							
HB27SN-37084AB	3/8 - 08 - 4st	.500	79	1.12	2.25 (max)	.375	15/16 - 16	125 lbs	1 - 3	050
HB27SN-37101AB	3/8 - 10 - 1st	.100	49							
HB27SN-37102AB	3/8 - 10 - 2st	.200	65							
HB27SN-37114AB	3/8 - 11 - 4st	.375	75							
HB27SN-37121AB	3/8 - 08 - 4st	.500	79							
HB27SN-37122AB	3/8 - 12 - 4st	.500	79							
HB27SN-37161AB	3/8 - 16 - 1st	.063	36							
HB27SN-43082AB	7/16 - 08 - 2st	.250	65							
HB27SN-43084AB	7/16 - 08 - 4st	.500	76							
HB27SN-50101AB	1/2 - 10 - 1st	.100	41							
HB27SN-50102AB	1/2 - 10 - 2st	.200	57							
HB27SN-62081AB	5/8 - 08 - 1st	.125	40							
HB27SN-62101AB	5/8 - 10 - 1st	.100	35	1.63	2.90 (max)	.50	1 3/8 - 16	250 lbs	3 - 10	075
HB27SN-62102AB	5/8 - 10 - 2st	.200	51							
HB27SN-75061AB	3/4 - 10 - 1st	.100	31							
HB27SN-75081AB	3/4 - 08 - 1st	.125	36	1.88	3.00 (max)	.60	1 9/16 - 18	350 lbs	5 - 15	100
HB27SN-75101AB	3/4 - 06 - 1st	.167	44							
HB27SN-10005AB	1 - 05 - 1st	.200	41							
HB27SN-10008AB	1 - 08 - 1st	.125	29							
HB27SN-10010AB	1 - 10 - 1st	.100	25							

METRIC

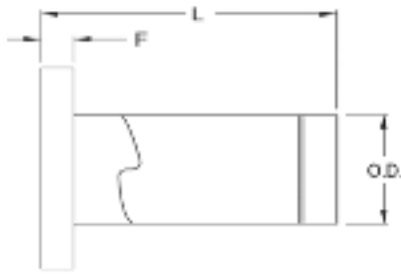
Catalog Number	Screw Size O.D. mm - # Thds. mm - Starts	Lead mm	Efficiency %	Nut Dimensions			TH	Design Load	Drag Torque (oz-in)	Flange HB250F-
				OD	L	C				
HB27SNM10021AB	10 - 0.5 - 1	2	41	.82	1.875	.250	5/8 - 18	25 lbs	1 - 3	037
HB27SNM10031AB	10 - 0.333 - 1	3	53	.82	1.875	.250	5/8 - 18	25 lbs	1 - 3	037
HB27SNM10206AB	10 - 0.3 - 6	20	81	.82	1.875	.250	5/8 - 18	25 lbs	1 - 3	037
HB27SNM12052AB	12 - 0.4 - 2	5	59	1.12	2.250	.375	15/16 - 16	125 lbs	1 - 3	050
HB27SNM16041AB	16 - 0.25 - 1	4	47	1.40	2.600	.500	1.25 - 16	175 lbs	2 - 6	1250
HB27SNM20041AB	20 - 0.25 - 1	4	41	1.64	2.900	.500	1 3/8 - 16	250 lbs	3 - 10	075
HB27SNM24051AB	24 - 0.2 - 1	5	42	1.88	3.000	.600	1 9/16 - 18	350 lbs	5 - 15	100

Acme
4 Screws & Nuts

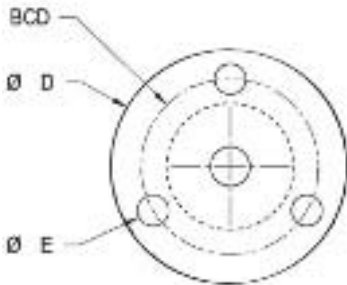


Advanced Anti-Backlash SUPERNUTS™

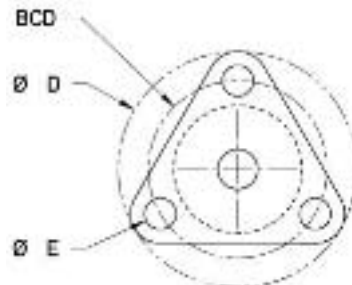
SIDE VIEW



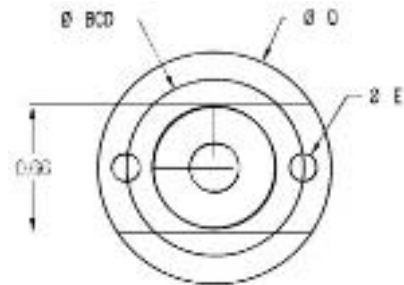
FRONT VIEWS



7/16", 1/2" and 5/8" screw size O.D.



5/16" and 3/8" and screw size O.D.



1/4" screw size O.D. only.

- Features reduced drag.

ADVANCED ANTI-BACKLASH SUPERNUTS™

MATERIAL: Acetal with PTFE

TEMPERATURE RANGE: Min. 32°F, Max. 180°F

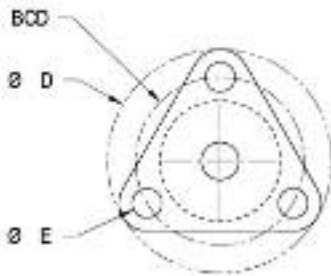
INCH

All dimensions are expressed in inches, unless otherwise noted.

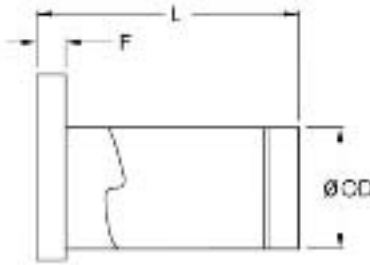
Catalog Number	Screw Size O.D. - # Thds Starts	Lead	Efficiency %	OD	L (Max)	D	E	F	BCD	Design Load	Drag-Torque oz-in
HB27FT-25201AB	1/4 - 20 1st	.050	41	.64	1.180	1.19	.141	.16	.900	100 lbs	<1
HB27FT-25161AB	1/4 - 16 - 1st	.630	48								
HB27FT-31122AB	5/16 - 12 - 2st	.167	65	.82	1.875	1.50	.200	.20	1.125	250 lbs	1-3
HB27FT-31082AB	5/16 - 8 - 2st	.250	72								
HB27FT-31084AB	5/16 - 8 - 4st	.500	80								
HB27FT-37161AB	3/8 - 16 - 1st	.063	36	.82	1.875	1.50	.200	.20	1.125	250 lbs	1-3
HB27FT-37121AB	3/8 - 12 - 1st	.083	44								
HB27FT-37101AB	3/8 - 10 - 1st	.100	49								
HB27FT-37081AB	3/8 - 08 - 1st	.125	53								
HB27FT-37122AB	3/8 - 12 - 2st	.167	60								
HB27FT-37102AB	3/8 - 10 - 2st	.200	65								
HB27FT-37114AB	3/8 - 11 - 4st	.375	75								
HB27FT-37084AB	3/8 - 08 - 4st	.500	79								
HB27FT-37055AB	3/8 - 05 - 5st	1.000	82								
HB27FT-37045AB	3/8 - 04 - 5st	1.200	82								
HB27FT-43082AB	7/16 - 08 - 2st	.250	65	1.12	2.250	1.75	.200	.30	1.406	125 lbs	1-3
HB27FT-43084AB	7/16 - 08 - 4st	.500	76								
HB27FT-50101AB	1/2 - 10 - 1st	.100	41	1.40	2.600	2.13	.220	.50	1.688	175 lbs	2-6
HB27FT-50102AB	1/2 - 10 - 2st	.200	57								
HB27FT-62101AB	5/8 - 10 - 1st	.100	35								
HB27FT-62081AB	5/8 - 08 - 1st	.125	40								
HB27FT-62102AB	5/8 - 10 - 2st	.200	51								



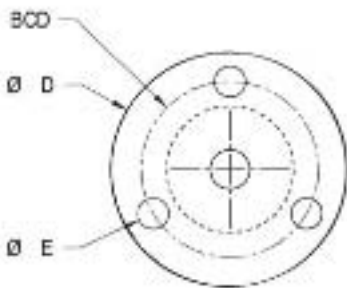
Advanced Anti-Backlash SUPERNUTS™



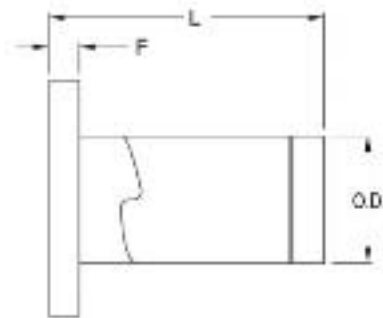
10 mm screw size O.D. only



■ Features reduced drag.



12 and 16 mm screw size O.D.



ADVANCED ANTI-BACKLASH SUPERNUTS™

MATERIAL: Acetal with PTFE

TEMPERATURE RANGE: Min. 32°F, Max. 180°F

METRIC

All dimensions are expressed in inches, unless otherwise noted.

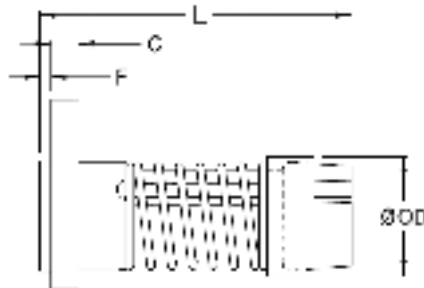
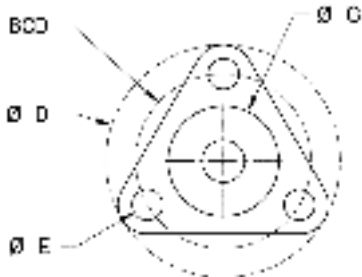
Catalog Number	Screw Size O.D. mm - # Thds mm - Starts	Lead mm	Efficiency %	OD	L (Max)	D	E	F	BCD	Design Load	Drag-Torque (oz-in)
HB27FTM10021AB	10 - 0.5 - 1st	2	41	.82	1.875	1.50	.20	.20	1.125	25 lbs	1-3
HB27FTM10031AB	10 - 0.33 - 1st	3	53	.82	1.875	1.500	.20	.20	1.125	25 lbs	1-3
HB27FTM10206AB	10 - 0.3 - 6st	20	81	.82	1.875	1.50	.20	.20	1.125	25 lbs	1-3
HB27FTM12052AB	12 - 0.4 - 2st	5	59	1.12	2.250	1.75	.20	.30	1.406	125 lbs	1-3
HB27FTM16041AB	16 - 0.25 - 1	4	47	1.40	2.600	2.13	.22	.50	1.688	175 lbs	2-6



Advanced Anti-Backlash SUPERNUTS™

FEATURES

- Non-Corrosive
- Lightweight
- Low Cost
- Low Friction
- Self-Lubricating



- Features reduced drag.

ADVANCED ANTI-BACKLASH SUPERNUTS™

MATERIAL: Acetal with PTFE

TEMPERATURE RANGE: Min. 32°F, Max. 180°F

INCH

All dimensions are expressed in inches, unless otherwise noted.

Catalog Number	Screw Size O.D. - # Thds. - Starts	Lead	Efficiency %	Design Load	Drag Torque oz - in	OD	L	C	D	E	F	G	BCD
HB28FT-37045AB	3/8 - 04 - 5st	1.200	82	10 lbs	2 - 5	.77	2.00	.20	1.50	.20	.06	.71	1.125
HB28FT-37055AB	3/8 - 05 - 5st	1.000	82										
HB28FT-37081AB	3/8 - 08 - 1st	.125	53										
HB28FT-37084AB	3/8 - 08 - 4st	.500	79										
HB28FT-37101AB	3/8 - 10 - 1st	.100	49										
HB28FT-37102AB	3/8 - 10 - 2st	.200	65										
HB28FT-37114AB	3/8 - 11 - 4st	.364	75										
HB28FT-37121AB	3/8 - 12 - 1st	.083	44										
HB28FT-37122AB	3/8 - 12 - 2st	.167	60										
HB28FT-37161AB	3/8 - 16 - 1st	.063	36										
HB28FT-43082AB	7/16 - 08 - 2st	.250	65										
HB28FT-43084AB	7/16 - 08 - 4st	.500	76										

Metric

Catalog Number	Screw Size O.D. mm - # Thds. mm Starts	Lead mm	Efficiency	Design Load	Drag Torque (oz - in)	OD	L	C	D	E	F	G	BCD
HB28FTM10021AB	10 - 0.5 - 1st	2	41	10 lbs	2 - 5	.77	2.00	.20	1.50	.20	.06	.71	1.125
HB28FTM10031AB	10 - 0.333 - 1st	3	53										
HB28FTM10206AB	10 - 0.30 - 6st	20	81										