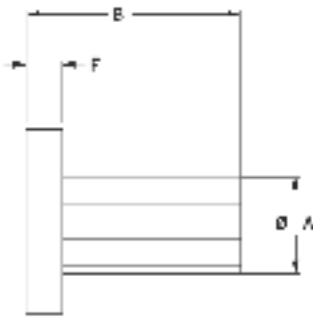
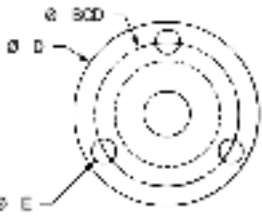
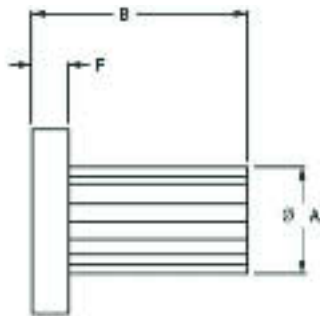
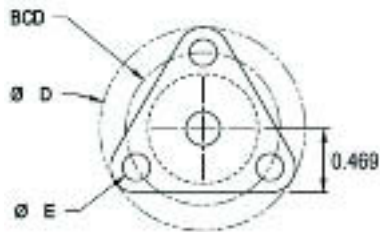




Flange Mount SUPERNUTS™



12 mm and 16 mm screw size O.D.



10 mm screw size O.D. only



FLANGE MOUNT SUPERNUTS™

MATERIAL: Acetal with PTFE

TEMPERATURE RANGE: Min. 32°F, Max. 180°F **METRIC**

All dimensions are expressed in inches, unless otherwise noted.

Catalog Number	Screw Size O.D. mm - # Thds. mm - Starts	Lead mm	Efficiency %	Design Load	Drag Torque	A	B	D	E	F	BCD
HB29FTM10021	10 - 0.5 - 1	2	41	75 lbs	N/A	.71	1.50	1.50	.20	.20	1.125
HB29FTM10031	10 - 0.333 - 1	3	53	75 lbs		.71	1.50	1.50	.20	.20	1.125
HB29FTM10206	10 - 0.3 - 6	20	81	75 lbs		.50	.75	1.00	.14	.15	.750
HB29FTM12052	12 - 0.4 - 2	5	59	125 lbs		.75	1.50	1.50	.20	.25	1.125
HB29FTM16041	16 - 0.25 - 1	4	47	175 lbs		.88	1.63	1.50	.20	.30	1.188