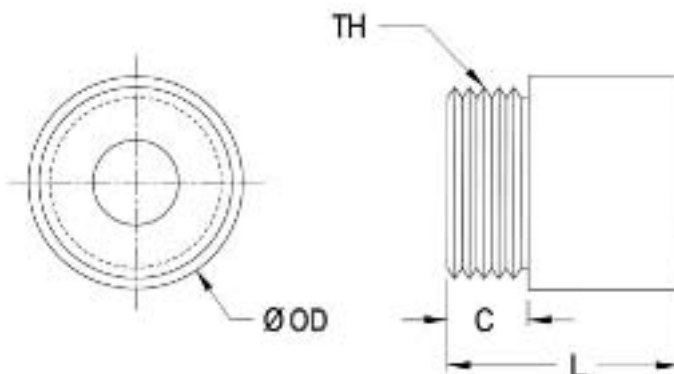




Bronze Nuts



THREAD MOUNT STANDARD NUT STYLE

MATERIAL: Bronze SAE 660

TEMPERATURE RANGE: Min. -65°F, Max. 250°F

FRICITION COEFFICIENT: 0.2 to 0.3

All dimensions are expressed in inches, unless otherwise noted.

INCH

Catalog Number	Screw Size O.D. - # Thds. Starts	Lead	OD	L	C	TH	Design Load	Max Static Load	Torque To Raise 1 lb oz - in	Flange HB250F-
HB20BN-25201	1/4 - 20 - 1st	.050	.625	.625	.187	9/16/18	110 lbs	550 lbs	.41	025
HB20BN-25161	1/4 - 16 - 1st	.063	.625	.625	.187	9/16/18	110 lbs	550 lbs	.41	025
HB20BN-37101	3/8 - 10 - 1st	.100	.750	.750	.250	5/8/18	300 lbs	1500 lbs	.67	037
HB20BN-37121	3/8 - 12 - 1st	.083	.750	.750	.250	5/8/18	300 lbs	1500 lbs	.64	
HB20BN-37161	3/8 - 16 - 1st	.063	.750	.750	.250	5/8/18	300 lbs	1500 lbs	.61	
HB20BN-50101	1/2 - 10 - 1st	.100	1.000	1.000	.375	15/16 - 16	620 lbs	3100 lbs	.83	050
HB20BN-50102	1/2 - 10 - 2st	.200	1.000	1.000	.375	15/16 - 16	620 lbs	3100 lbs	1.10	
HB20BN-62081	5/8 - 8 - stub	.100	1.000	1.000	.375	15/16 - 16	860 lbs	4300 lbs	1.06	
HB20BN-62101	5/8 - 10 - 1st	.100	1.000	1.000	.375	15/16 - 16	860 lbs	4300 lbs	.99	075
HB20BN-62102	5/8 - 10 - 2st	.200	1.000	1.000	.375	15/16 - 16	860 lbs	4300 lbs	1.26	
HB20BN-75061	3/4 - 6 - 1st	.167	1.500	1.500	.500	1 3/8 - 16	1500 lbs	1500 lbs	1.28	
HB20BN-75101	3/4 - 10 - 1st	.100	1.500	1.500	.500	1 3/8 - 16	1500 lbs	1500 lbs	1.15	075
HB20BN-10005	1 - 5 - 1st	.200	1.500	1.500	.500	1 3/8 - 16	1900 lbs	9500 lbs	1.67	
HB20BN-10008	1 - 8 - 1st	.125	1.500	1.500	.500	1 3/8 - 16	1900 lbs	9500 lbs	1.52	
HB20BN-10010	1 - 10 - 1st	.100	1.500	1.500	.500	1 3/8 - 16	1900 lbs	9500 lbs	1.47	

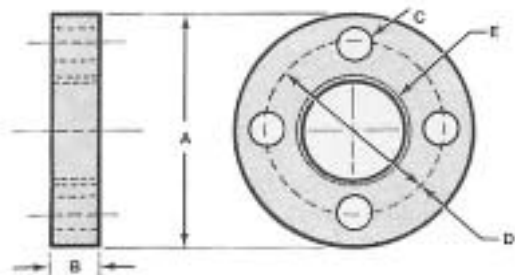
NOTE:Lubrication is recommended when using these lead screw nuts.



Standard Mounting Flanges

FOR SUPERNUTS™ & BRONZE NUTS

MATERIAL: Aluminum (6062-T6) All dimensions are expressed in inches, unless otherwise noted.



Catalog Number	Flange Dimensions				
	A	B	C (dia.)	D (dia.)	E Thread
HB250F-025	1.25	.187	.140	1.00	9/16-18
HB250F-037	1.60	.250	.177	1.24	5/8 - 18
HB250F-050	2.00	.375	.266	1.50	15/16 - 16
HB250F-075	2.50	.500	.266	2.00	1 3/8 - 16
HB250F-100	3.00	.600	.266	2.37	1 9/16 - 18