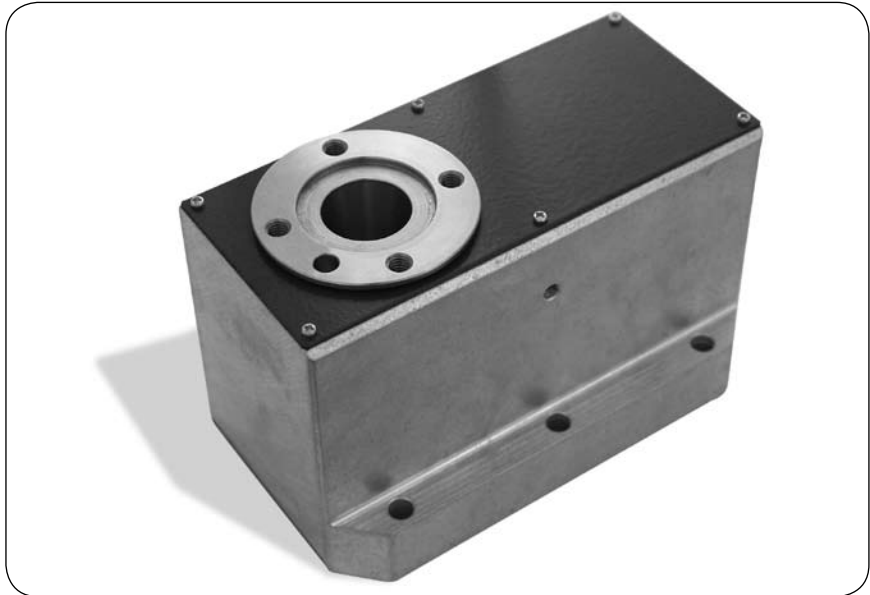


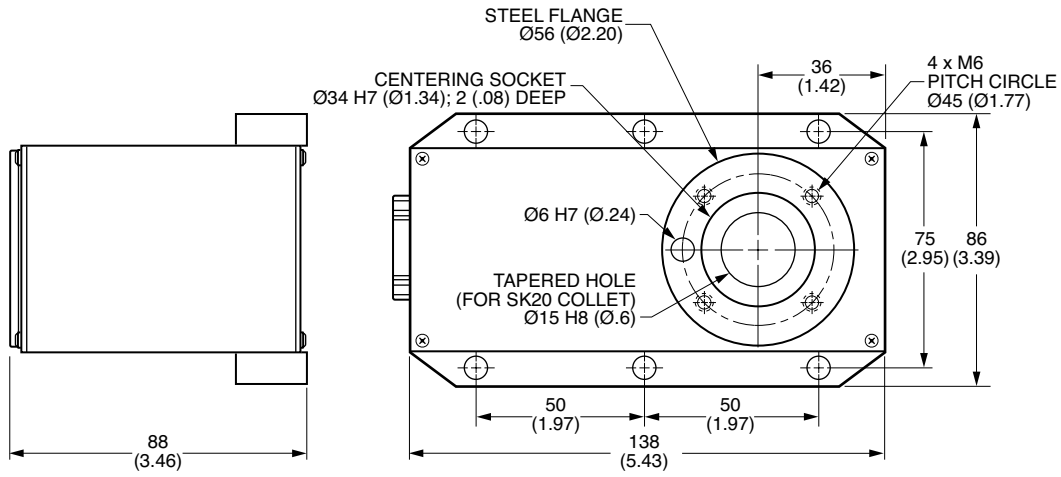
FEATURES:

- 20:1 Reduction
- Stepper motor only
- Small footprint
- Reduction via belt and timing pulley
- Includes 4 tapped holes M6
- Takes an SK20 collet
- Home / Limit Switch

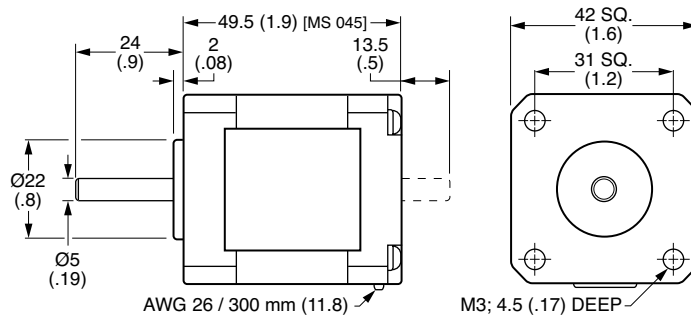
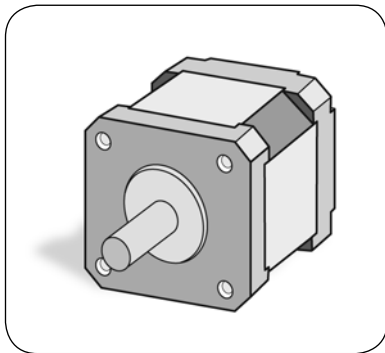


Catalog Number	Part Description
HL36S0M260300	ZR20 Rotary Table with Stepper Motor

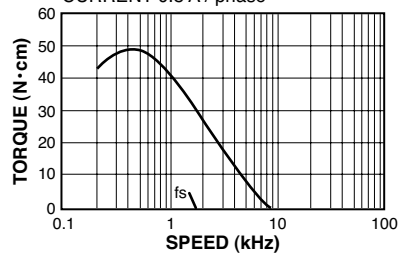
SPECIFICATIONS	
Reduction Ratio	20:1
Maximum Speed	60 rpm
Maximum Moment	8 N·m (70.8 lb·in)
Holding Torque	14 N·m (124 lb·in)
Resolution (Half-Step)	3.5 arc min
Max Load (Table Horizontal)	10 kg (22 lb)
Max Load (Table Vertical)	5 kg (11 lb)
Current per phase (Unipolar)	1.8 A
Coil Voltage per phase	3.2 V
Winding inductance per phase	5.4 mH
Step Angle	1.8°
Connecting Lines	4
Weight	2.1 kg (4.62 lb)



STEPPER MOTOR



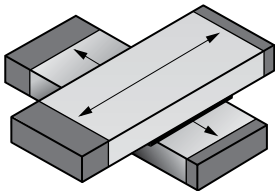
OPERATING VOLTAGE 24V DC
UNIPOLAR CONSTANT CURRENT.
CURRENT 0.8 A / phase



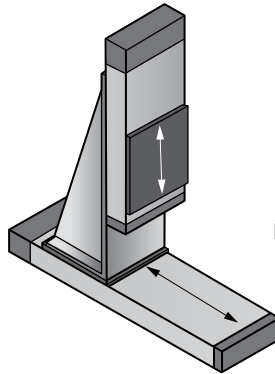
X/Y BASE UNITS
X/Z BASE UNITS
Y/Z BASE UNITS

**COMPOUND TABLES
(2-AXES)**

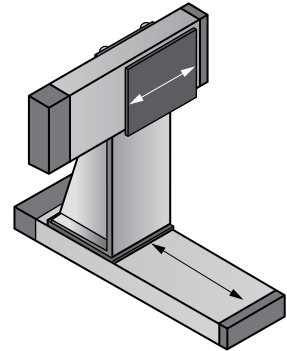
FORMAT #5



FORMAT #6

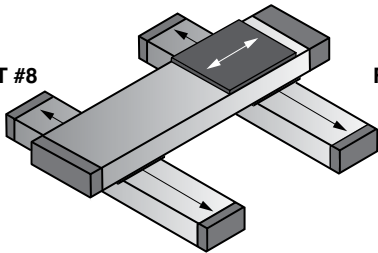


FORMAT #7

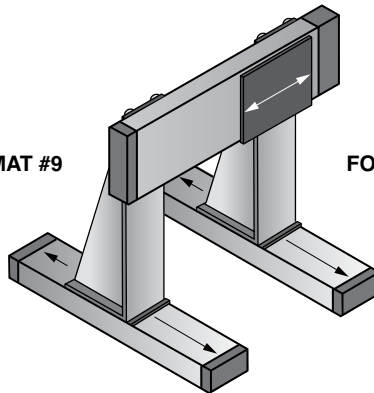


**H-CONSTRUCTION
(2-AXES)**

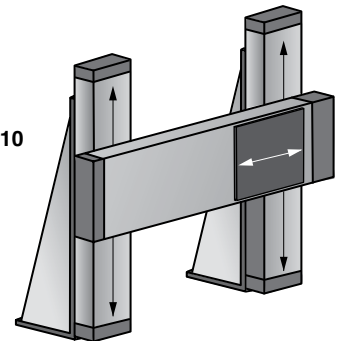
FORMAT #8



FORMAT #9

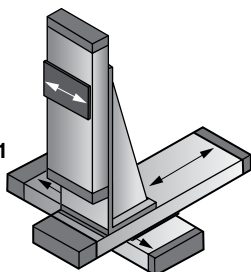


FORMAT #10

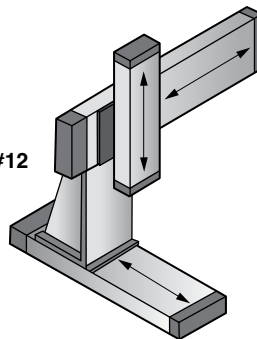


(3-AXES)

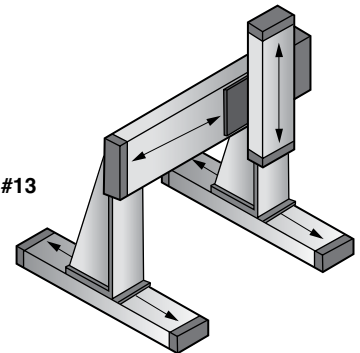
FORMAT #11



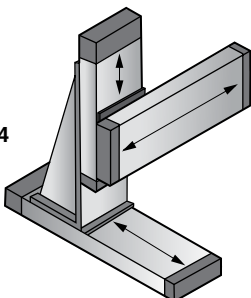
FORMAT #12



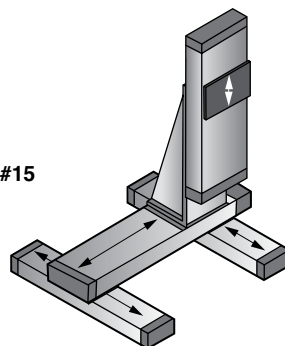
FORMAT #13



FORMAT #14



FORMAT #15



FORMAT #16

