



Series 200 Double Rails*

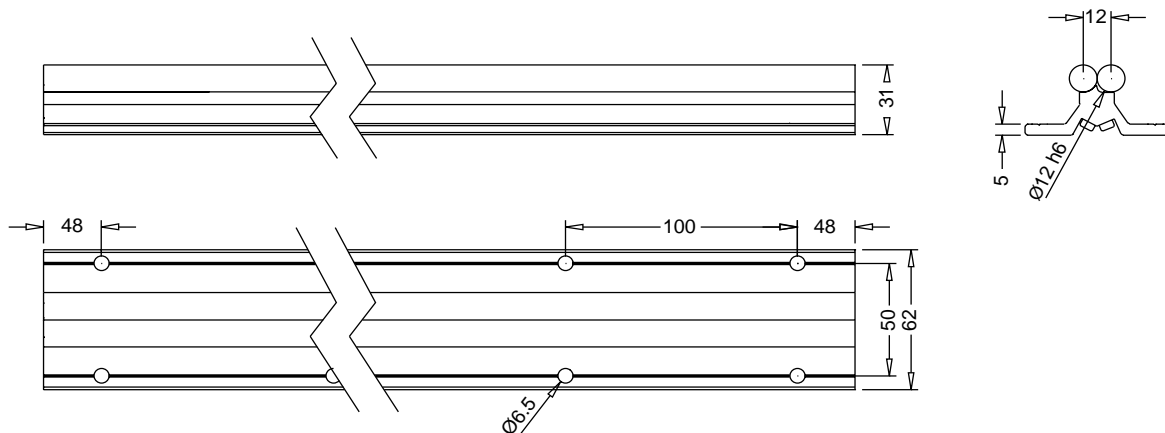
FEATURES

- Guide Rails are fully supported uniformly throughout travel range on clear anodized aluminum support profile
- Steel shafts are connected and tightened against each other by M5 screws. This produces a precise and rigid rail system ideal for most Linear Motion applications
- Guide Rails and Support Profile are sold as assembly in a variety of lengths
- Guide rails consist of two precision ground $\text{Ø}12$ mm Cf53 steel shafts, hardened to RC 62 + 2, with M5 threads on 100 mm centers
- Aluminum support profile has pairs of mounting holes at 100 mm intervals down the length of the rail system. Each pair of holes is 50 mm apart for easy mounting to our aluminum extrusions (shown in the 'aluminum extrusion' section)

* This *isel* Linear System is patented.

Length mm	Catalog Number
400	HL4235M2000400
500	HL4235M2000500
600	HL4235M2000600
700	HL4235M2000700
800	HL4235M2000800
900	HL4235M2000900
1000	HL4235M2001000
1100	HL4235M2001100
1200	HL4235M2001200
1300	HL4235M2001300
1400	HL4235M2001400
1500	HL4235M2001500
1800	HL4235M2001800
2000	HL4235M2002000
2500	HL4235M2002500
3000	HL4235M2003000

NOTE: Actual length is 2 mm less than nominal length.





Series 200 Compatible Carriages

Roller Carriage 2*

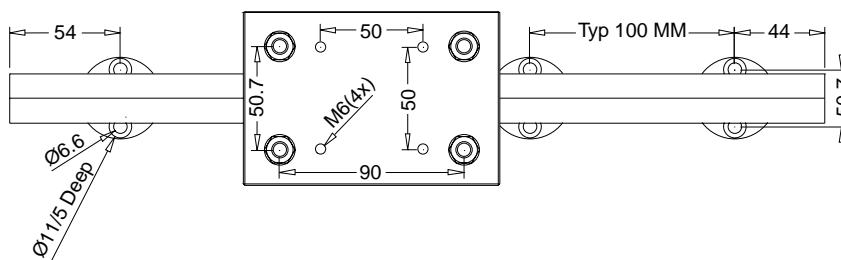
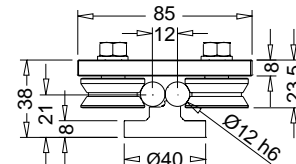
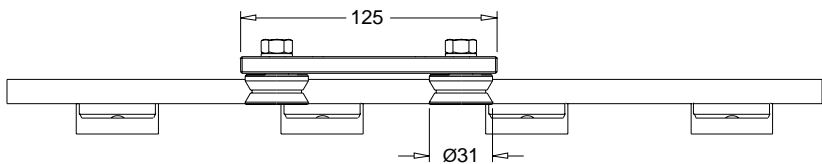
FEATURES

- For use with Series 2 and 200 Double Rail
- Factory preloaded with two rollers that have eccentric mounting to allow for easy preload and clearance adjustment
- Four precision rollers, Ø31 mm on each plate. Each roller has two sealed bearings, lubricated for life, for minimal maintenance
- Consists of a ground and hardened steel plate 125 x 97 x 8 mm with four M6 threaded holes on a 50 mm grid for easy mounting
- Rollers are available separately for OEM applications, see page 47
- Travel at up to 10 m/sec, with ultraquiet operation

* This *isel* Linear System is patented.



ROLLER CARRIAGE 2: HL46D0M223008



Maximum Load (N)

	F _z	F _y
Static	2800	2600
Dynamic	1400	1300

Maximum Moment (N·m)

	M _x	M _y	M _z
Static	73	125	65
Dynamic	38	60	32

For information on individual rollers, please see page 47



Series 200 Compatible Carriages

Bearing Carriage WS4*

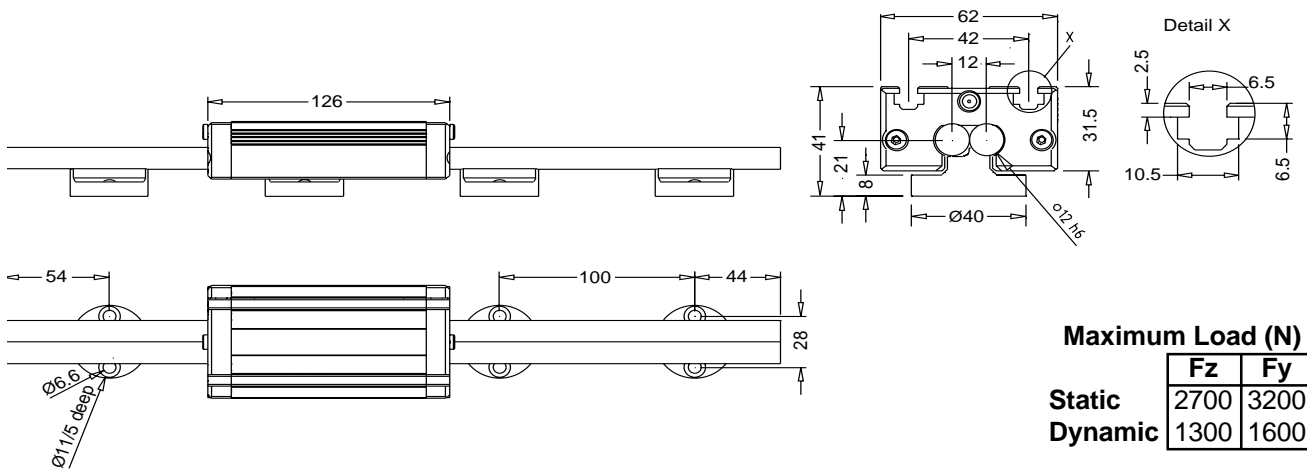
FEATURES

- Carriage consists of milled aluminum block with steel core for a low cost yet durable bearing
- Ø3.5 mm ball bearings incorporated into four recirculating raceways
- Balls ride on steel core, this provides travel at up to 5 m/sec
- 2 T-slots on top surface for mounting of M6 screws or nuts
- Complete with wipers and lubrication ports
- Compatible with the Series 2 Double Rail, Series 200, 400 and 500 Double Rail Systems

* This *isel* Linear System is patented.



BEARING CARRIAGE WS4: HL46D0M223104



Maximum Load (N)

	Fz	Fy
Static	2700	3200
Dynamic	1300	1600

Maximum Moment (N · m)

	Mx	My	Mz
Static	29	100	120
Dynamic	14	51	60