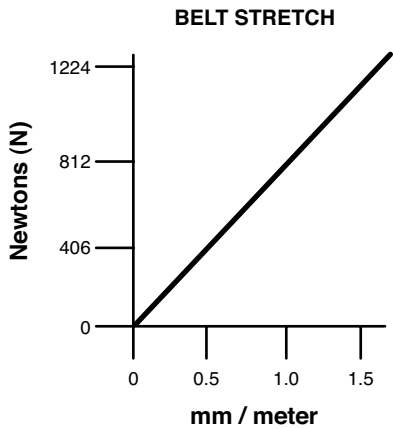
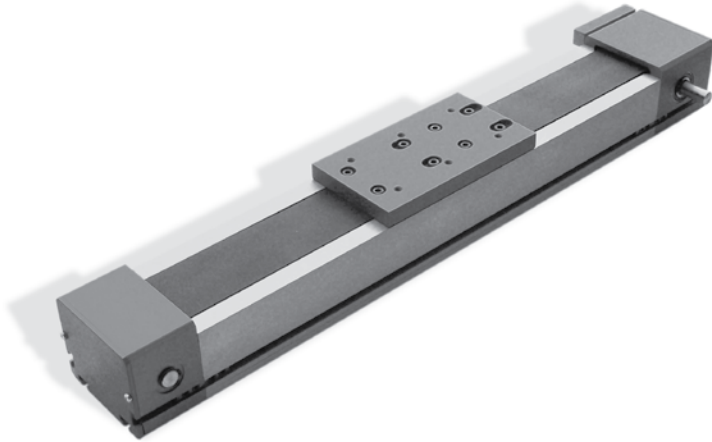


FEATURES:

- Stock lengths up to 3 meters
- NEMA 23 or 34, Stepper or Servomotor
- Customer length up to 6 meters
- 50 mm wide steel-reinforced HTD® belt
- T-Slots on three sides
- Stainless steel option
- All steel profile rail

Carriage Plate Included (Single Carriage Shown)



BELT - DRIVE SELECTION CATALOG NUMBER

HX31V3MP

Code	L Length mm (in)		Travel mm (in)
	1 Carriage	2 Carriage	
020	505 (19.9)	605 (23.8)	200 (7.9)
030	605 (23.8)	705 (27.8)	300 (11.8)
040	705 (27.8)	805 (31.7)	400 (15.7)
050	805 (31.7)	905 (35.6)	500 (19.7)
060	905 (35.6)	1005 (39.6)	600 (23.6)
070	1005 (39.6)	1105 (43.5)	700 (27.6)
080	1105 (43.5)	1205 (47.4)	800 (31.5)
090	1205 (47.4)	1305 (51.4)	900 (35.4)
100	1305 (51.4)	1405 (55.3)	1000 (39.4)
125	1555 (61.2)	1655 (65.2)	1250 (49.2)
150	1805 (71.1)	1905 (75)	1500 (59.1)
175	2055 (80.9)	2155 (84.8)	1750 (68.9)
200	2305 (90.7)	2405 (94.7)	2000 (78.7)
250	2805 (110.4)	2905 (114.4)	2500 (98.4)
300	3305 (130.1)	3405 (134.1)	3000 (118.1)

Code
020
030
040
050
060
070
080
090
100
125
150
175
200
250
300

External Prox. Switch
X No switch
R Switch on right side
L Switch on left side

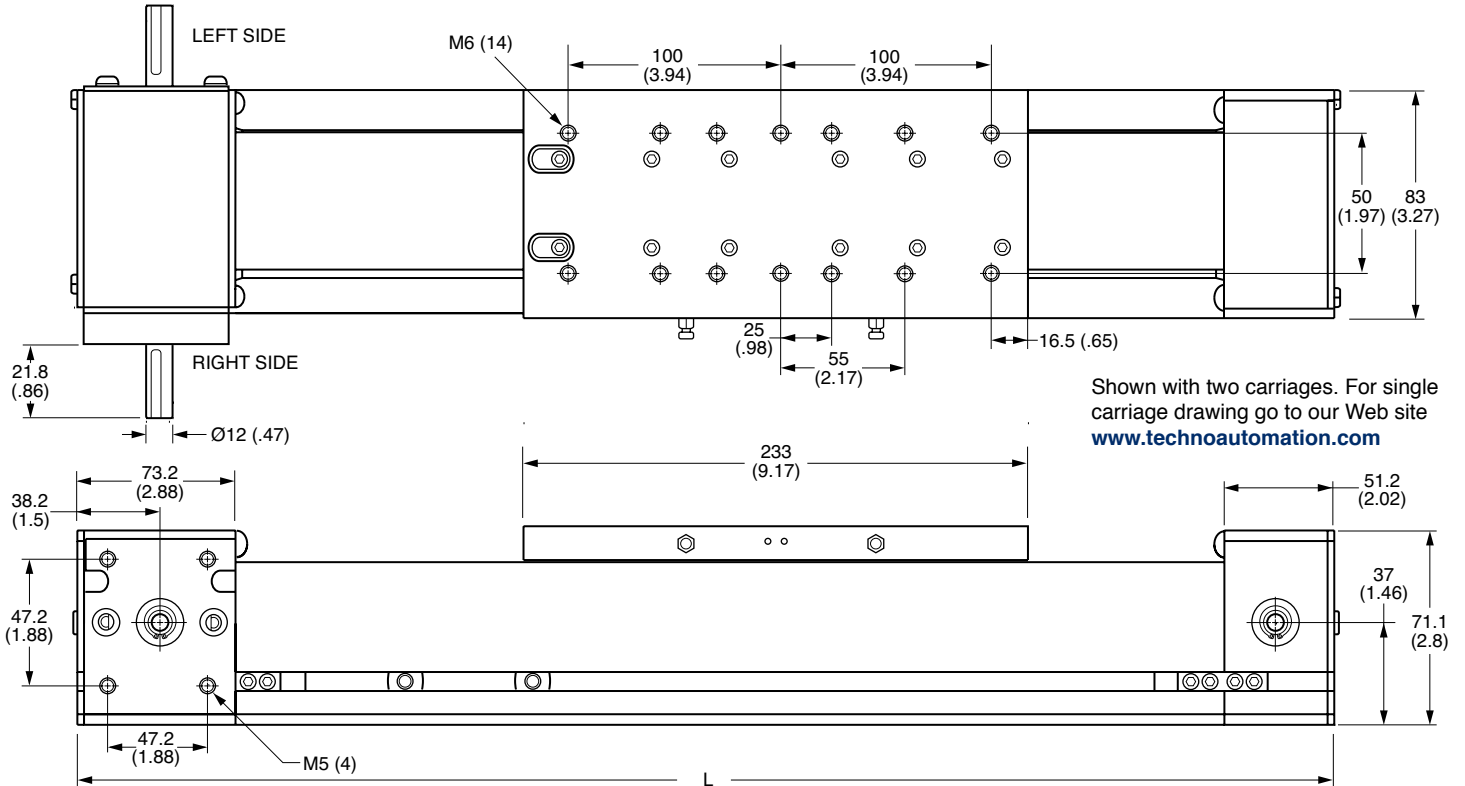
Motor Mounting
0 Right-hand side
1 Left-hand side

Motor Drive
X No Motor
S Stepper Motor
V Servomotor (216W)
L Servomotor (145W)
H Servomotor (426W)

of Carriages
1 or **2**

EXAMPLE: To order a Voyager Series VB1 with 500 mm travel (050), 145W Servomotor (L), 1 carriage (1), right hand motor mount (0) and no external prox. switch (X) is **HX31V3MP0501L0X**

For mating connectors and cables, see page 119. For motor standoffs and couplings, see page 107.



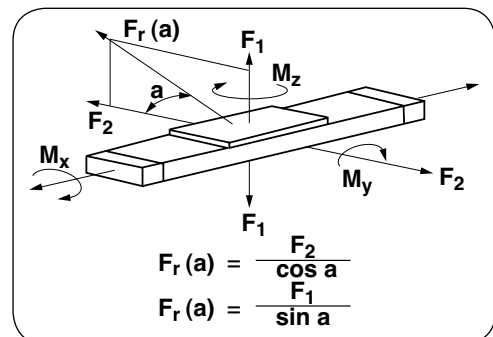
SPECIFICATIONS

Repeatability	0.1 mm (0.0039 in)
Accuracy	0.2 mm / 300 mm (0.0079 / 11.811 in)
Mass of Belt	0.205 kg / meter (8.07 lbs · ft)
Max. Belt Strength @ 3000 rpm	1300 N (292 lbf)
Overall Belt Thickness	3.6 mm (0.1417 in)
Tooth height	2.1 mm (0.0827 in)
Breakway Torque	<.33 Nm (2.92 in-lbs.)
Single Carriage Mass	0.75 kg (1.7 lb)
Mass of dual carriage	1.40 kg (3.1 lb)
Weight without motor module	7.59 kg / meter (298.8189 lbs · ft)
Pitch diameter of pulley	44.6 mm (1.7559 in)
Pulley mass moment of inertia	0.0001393 kg x meter sq (1.39 x 10 ⁻⁴ kg m ²)
Effective Pulley circumference	140 mm (5.5118 in)
Max dynamic load per carriage	22.3 kN (16448 lbf)
Rail / carriage coefficient of friction	0.003
Belt type	5 mm HTD®, 50 mm wide
Belt Material	Polyurethane, Steel Reinforced

Voyager Series VB1

LOAD and MOMENT DATA

# of Carriages	1 Carriage	2 Carriage
F1 Stat	38.4 kN (8633 lbf)	76.8 kN (17265 lbf)
F1 Dyn	22.3 kN (5013 lbf)	44.6 kN (10026 lbf)
F2 Stat	38.4 kN (8633 lbf)	76.8 kN (17265 lbf)
F2 Dyn	22.3 kN (5013 lbf)	44.6 kN (10026 lbf)
Mx Stat	0.361 kN·m (266 lbf·ft)	0.722 kN·m (533 lbf·ft)
Mx Dyn	0.181 kN·m (133 lbf·ft)	0.361 kN·m (266 lbf·ft)
My Stat	0.334 kN·m (246 lbf·ft)	1.75 kN·m (1291 lbf·ft)
My Dyn	0.167 kN·m (123 lbf·ft)	0.875 kN·m (645 lbf·ft)
Mz Stat	0.334 kN·m (246 lbf·ft)	1.75 kN·m (1291 lbf·ft)
Mz Dyn	0.167 kN·m (123 lbf·ft)	0.875 kN·m (645 lbf·ft)



NOTE: Dimensions in () are inch