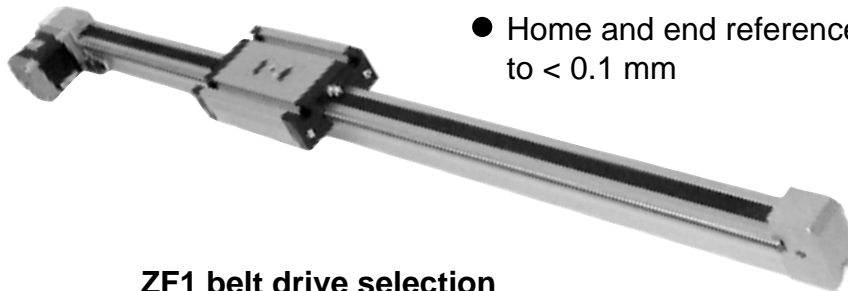


- Carriage rides on two Ø8 mm precision ground steel shafts that are supported along the entire length of travel to minimize deflection
- Lengths up to 3 meters
- Available with a 50 N·cm, 160 N·cm stepper motor, 120W servomotor or no motor
- Maximum speed: 1.5 m/s
- Belt is 3 mm HTD, 9 mm wide. HTD belt profile helps reduce backlash
- Home and end reference switch repeatable to < 0.1 mm



**ZF1 belt drive selection  
Catalog Number**

HL3105MP

**Carriage Type**

- 0 Bearing Carriage
- 1 Roller Carriage

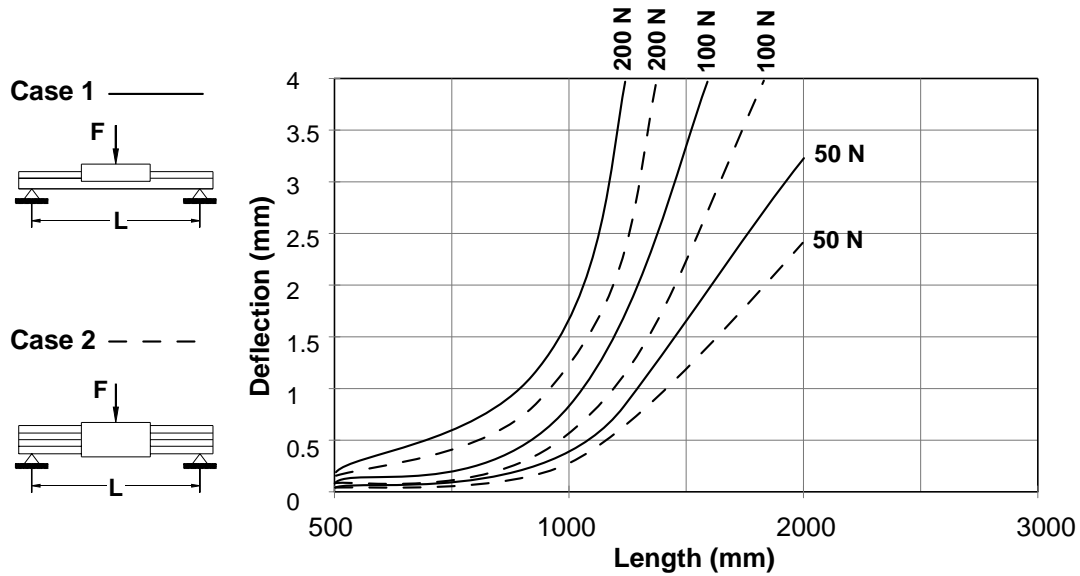
**Motor Type**

- 0 50 N·cm Stepper motor
- 1 160 N·cm Stepper motor, 2:1 Ratio
- 2 120W Servomotor, 2:1 Ratio
- 3 No motor

Code	Length (mm)	Travel (mm)
030	298	153
040	398	253
050	498	353
060	598	453
068	675	530
070	698	553
080	798	653
100	998	853
150	1498	1353
180	1798	1653
200	1998	1853
250	2498	2353
300	2998	2853



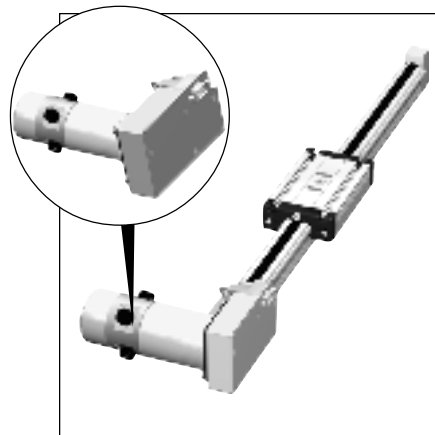
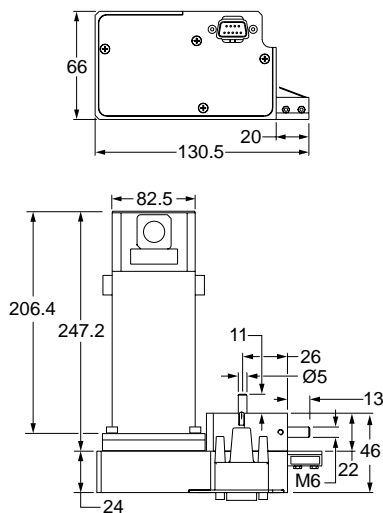
Deflection Chart – ZF1



DC Servomotor

Catalog Number: HZ2600M05NEMA23V

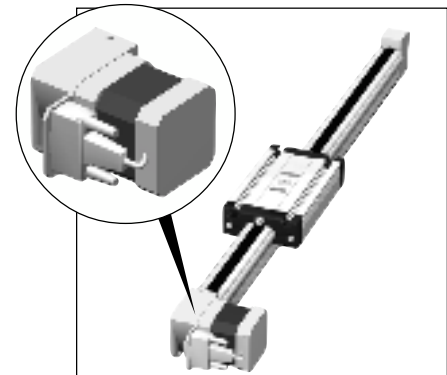
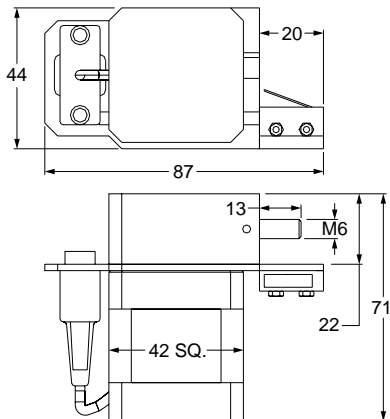
Specifications	
Power	120W
Maximum Operating Speed	6000 rpm
Continuous Stall Torque	50 oz·in
Maximum Continuous Current	4.2A
Maximum Terminal Voltage	60V
Peak Stall Torque	350 oz·in
Maximum Pulse Current	31A
Operating Temperature	0°C to 40°C



50 N.cm Stepper Motor

Catalog Number: HL2600M05NEMA17

Specifications			
<b>Holding Torque</b> .....	50 N.cm	<b>Resistance</b> .....	1.1Ω
<b>Step Size: Full</b> .....	1.8°	<b>Inductance</b> .....	1.85mH
<b>Half</b> .....	0.9°	<b>Current – bipolar</b> .....	1.8A
<b>Voltage – bipolar</b> .....	3.2V		



160 N.cm Stepper Motor

Catalog Number: HL2600M05NEMA23

Specifications			
<b>Holding Torque</b> .....	160 N.cm	<b>Resistance</b> .....	1.2Ω
<b>Step Size: Full</b> .....	1.8°	<b>Inductance</b> .....	2.2mH
<b>Half</b> .....	0.9°	<b>Current – bipolar</b> .....	4.1A
<b>Voltage – bipolar</b> .....	1.7V		

