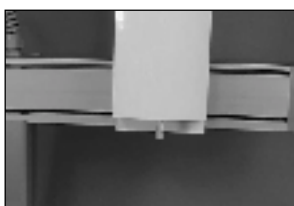


FEATURES

- ◆ All Wizards are complete systems with motors and electronics for standalone operation
- ◆ Cantilevered style machine for easy loading and unloading of large parts
- ◆ Belt driven axis with speeds up to 800 mm / sec
- ◆ Ideal for inspection, fluid dispensing and automatic screwdriving
- ◆ 16 inputs, 16 outputs
- ◆ All axes repeatable to 0.01 mm
- ◆ Programming via RS 232 port or optional teach pendant
- ◆ Can store up to 100 programs
- ◆ Microstep electronics for smooth, continuous motion
- ◆ Optional teach pendant allows programming and operation of machine to be self-contained. No PC is needed



Model 200



(Optional rotary axis shown)

Complete Turnkey solutions with accessories available for:

- Dispensing
- Screw fastening
- Soldering
- CCD Camera/Inspection
- PC board cutting

Call us for details.

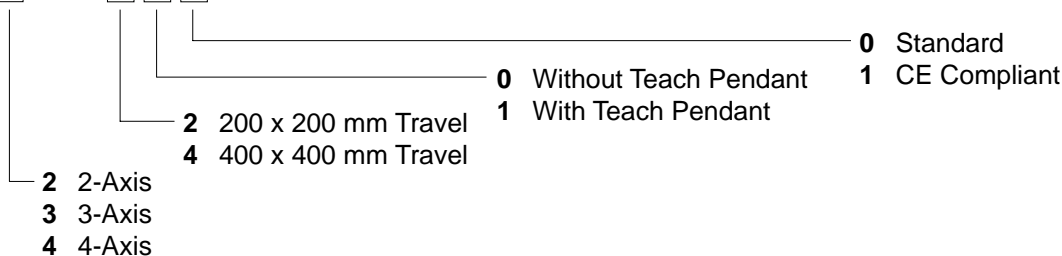


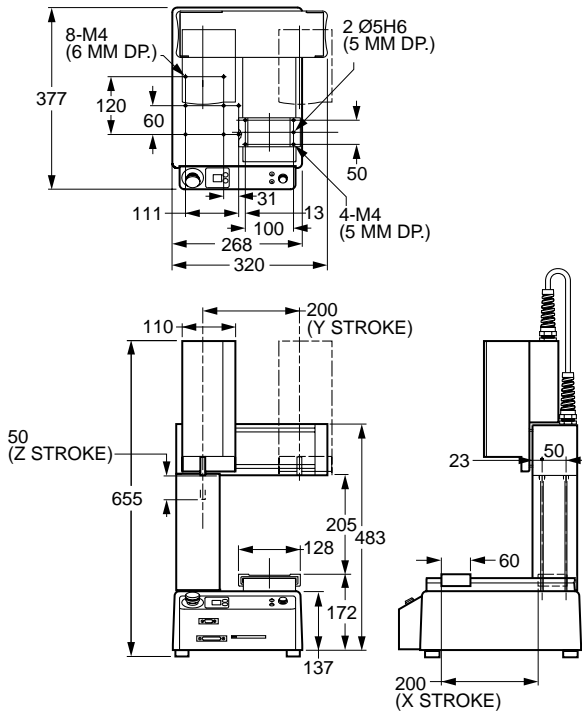
Model 400

2 MACHINES & SLIDES

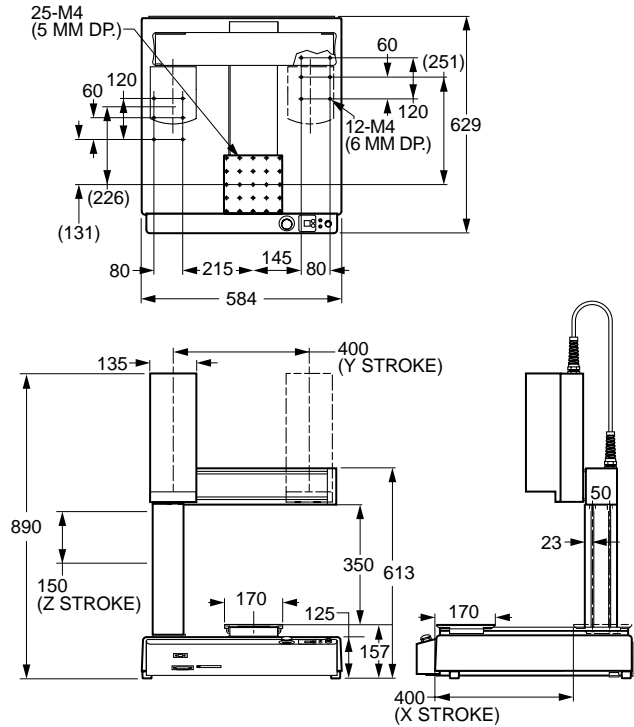
CATALOG NUMBER

HH3 SPM2





Model 200



Model 400

SPECIFICATIONS	Model 200	Model 400
Travel (mm)	200 x 200	400 x 400
Travel, z axis (mm)	50	150
Weight (kg)	18	42
Dimensions (wxdxh)	320 x 377 x 655	584 x 629 x 849
Repeatability (mm)	± 0.01	± 0.01
Repeatability of rotary axis (degrees)	± 0.02	± 0.02
Speed XY, PTP (mm/sec)	5 - 500	8 - 800
Speed Z, PTP (mm/sec)	2.5 - 250	3.2 - 320
Speed R, PTP (rpm)	6 - 600	8 - 800
Work table load capacity (kg)	7	11
Z axis load capacity, 2 axis (kg)	6.5	11
Z axis load capacity, 3 axis (kg)	3.5	6

ACCESSORIES

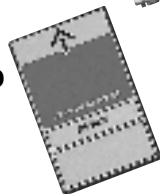
Teach Pendant:
HH6100MTEACPEN



Remote Estop Button:
HH6100MEXTESTOP



Memory Card:
HH6100MMEMCARD



Standard I/O Cable:
HH6100MIOCABLE