

FEATURES:

- Compact design suitable for general applications in horizontal or vertical mount
- Available with either 202 oz·in stepper motor or 120W servomotor
- Hardened, ground & flat milled Ø125 mm (Ø4.92 in) steel rotary surface
- Low backlash operation
- Large load capacity
- Ø23 mm hole through middle of rotary table
- Rigid cast aluminum body for durability
- Options include:
 1. Magnetic brake
 2. 3-jaw chuck
 3. Ø490 mm (Ø19.29 in) aluminum utility disk

(Stepper version shown)



3-Jaw Chuck
HL5600M269060125



490 mm Diameter Aluminum Flat Disk
HL5600M269051500

CATALOG NUMBER

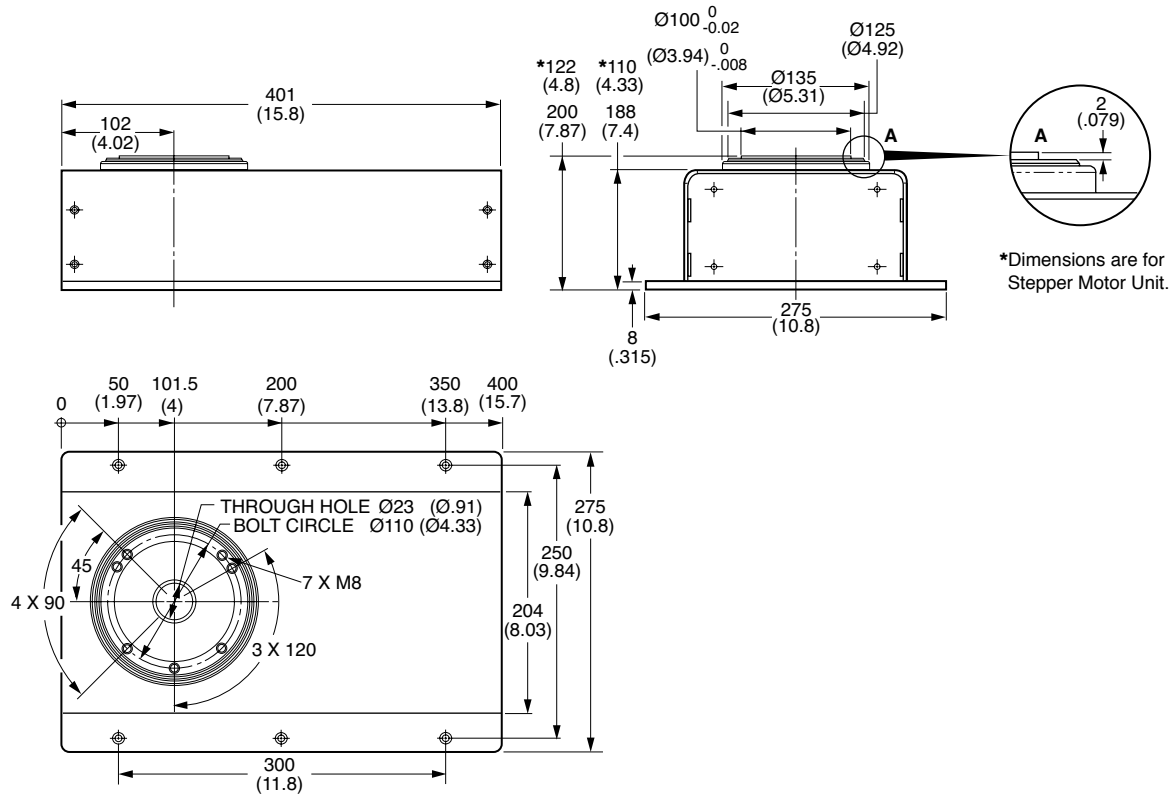
HL36 **0M263**

Motor Drive
S Stepper Motor
V Servomotor

Brake
0 No Brake
1 24V DC Brake

Output Reduction
0 1: 24
1 1: 52
2 1: 100

For mating connectors and cables, see page 119.



| SPECIFICATIONS | |
|----------------------------------------------|----------------------------------|
| POSITIONING ACCURACY | |
| Runout of Face Plate | ≤ 0.02 mm (.0008 in) |
| Concentricity of Face Plate | ≤ 0.02 mm (.0008 in) |
| Concentricity of the Center Shaft | ≤ 0.02 mm (.0008 in) |
| MATERIAL | |
| Body | Aluminum Casting |
| Tracks | Hardened and Ground Tool Steel |
| Roll Barrel | Roller Bearing Steel |
| Setup Assembly | Any Position |
| Limit Switch | Reed Sensor |
| Operating Temperature Range | 0°C to +70°C (32°F to 158°F) |
| Max. Force Load Perpendicular to Disc | 5000 N (1125 lb) Brake Closed |
| Max. Torque Load on Disc about Disc Diameter | 160 N·m (120 lb·ft) Brake Closed |
| Holding Torque of Magnetic Brake | 55 N·m (40 lb·ft) |

| Motor Drive | Output Reduction | Resolution sec | Output Torque N·m (lbf·ft) | Output rpm | Max. Loads for Mounting Orientations (brake open) kg (lb) | | | |
|---------------|------------------|----------------|----------------------------|------------|-----------------------------------------------------------|------------|-----------|------------|
| | | | | | Table: | Horizontal | Vertical | Vertical |
| | | | | | Load: | Vertical | Vertical | Horizontal |
| Stepper Motor | 1:24 | 135 | 17.5 (12.9) | 50 | | 80 (176) | 30 (66.1) | 60 (132) |
| | 1:52 | 62.3 | 38 (28) | 23 | | 120 (265) | 40 (88.2) | 80 (176) |
| | 1:100 | 32.4 | 75 (55.3) | 12 | | 150 (331) | 40 (88.2) | 80 (176) |
| Servo-motor | 1:24 | 54 | 45 (33.2) | 125 | | 100 (220) | 30 (66.1) | 60 (132) |
| | 1:52 | 24.9 | 98 (72.3) | 57 | | 140 (309) | 40 (88.2) | 80 (176) |
| | 1:100 | 12.9 | 188 (139) | 30 | | 170 (375) | 40 (88.2) | 80 (176) |

NOTE: Dimensions in () are inch