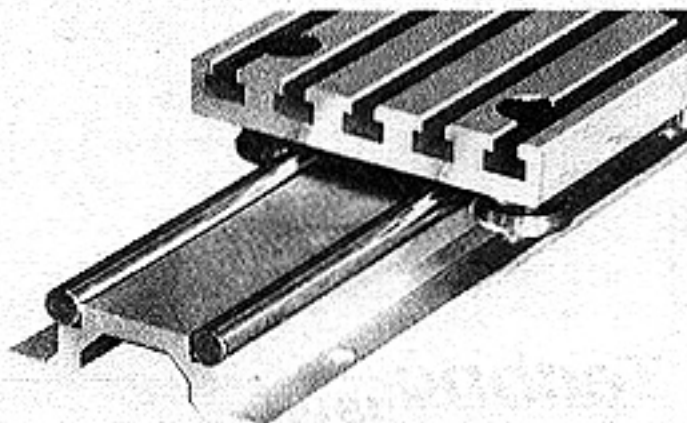


FEATURES

- Two guide rails supported uniformly throughout the length of travel by clear anodized, 90 mm wide aluminum support profile.
- Guide rails consist of two precision ground $\varnothing 12$ mm h6 steel shafts with M5 threaded holes spaced 100 mm apart. The shafts are hardened to RC62 ± 2 .
- The two rails are each supported by and attached to the support profiles every 100 mm at 45° to profile, ensuring they are parallel.
- The aluminum support profile has mounting holes 75 mm apart at 100 mm intervals along the length of the system. This allows for easy mounting to our Heavy Duty Extrusion Plates shown in the next section.
- The extra wide rail spacing and base design provide high torsional stability and torque load capacity. The double rail design can be used to provide virtually any length of travel by staggering the steel rails on the base plates.
- The double rail and support profile is sold as a complete assembly in lengths from 400 mm to 3000 mm.
- Maximum linear speeds of up to 10 m/sec.

**FEATURES**

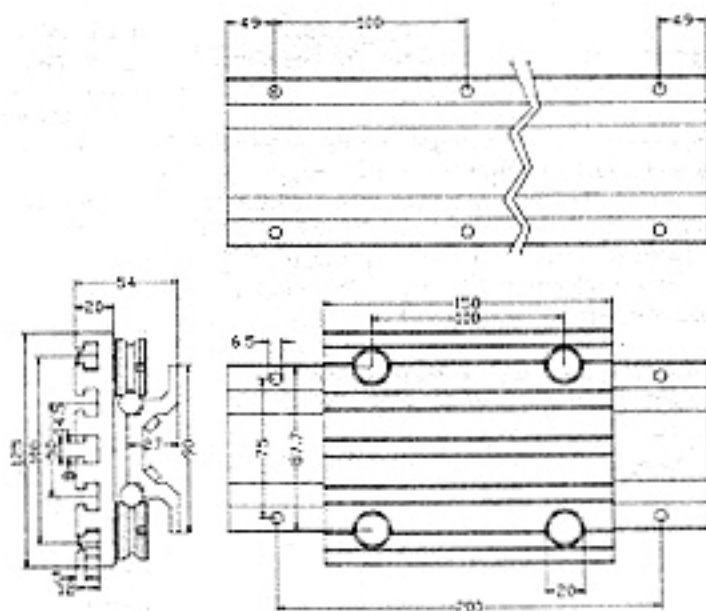
- Consists of flat milled aluminum plate 150 x 125 x 20 mm with five longitudinal "T" slots for M6, DIN 508 T-nuts.
- Four precision $\varnothing 31$ mm guide rollers are on each plate. Each roller has two rows of sealed bearings and are lubricated for life.
- Two of the four guide rollers have eccentric pivots by which the desired pre-load of carriage can be attained.
- The pre-load capability allows for play free operation.
- Maximum linear speeds up to 10 m/sec.
- Rollers are available separately for OEM applications.



* This *isel* Linear System is patented.

Length mm	Catalog Number
400	HL4235M3000400
500	HL4235M3000500
600	HL4235M3000600
700	HL4235M3000700
800	HL4235M3000800
900	HL4235M3000900
1000	HL4235M3001000
1100	HL4235M3001100
1200	HL4235M3001200
1300	HL4235M3001300
1400	HL4235M3001400
1500	HL4235M3001500
1800	HL4235M3001800
2000	HL4235M3002000
2500	HL4235M3002500
3000	HL4235M3003000

NOTE: Actual length is 2 mm less than nominal length.



Catalog Number

Roller Carriage 3
HL46D0M223005

Roller: $\phi 31$ mm
HL4500M222006
with eccentric mount
HL4500M222007

Maximum Load (N)

	F_z	F_y
Static	1075	2540
Dynamic	470	1100

Maximum Moment (N · m)

	M_x	M_y	M_z
Static	32.8	57.6	40
Dynamic	20	34.4	40

