



**HZ2600M1050XY3-S**  
Specifically made to mount our NEMA 23 Frame servomotors

For Use With:  
Heavy-Duty Slide 2, Page 74  
Narrow Profile Slide 2, Page 76  
Blueline 1, Page 78



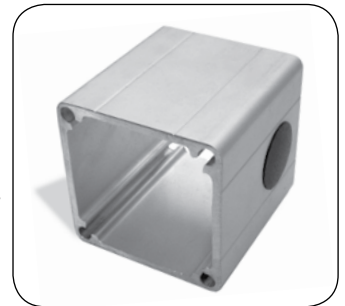
**HZ2600M0243600-S**  
Specifically made to mount our NEMA 23 Frame servomotors

For Use With:  
Gantry FB2, Page 64  
Z-Axis Slides, Page 66  
Bridge Mounted Slide, Page 70  
Standard-Duty Slide, Page 72

**MOTOR STANDOFFS**

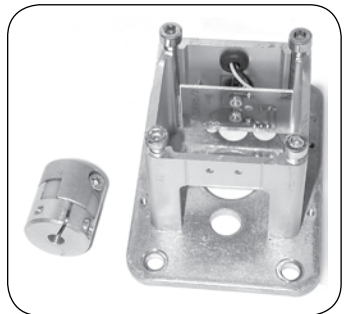
**NEMA 23 Frame**  
**HX4700MNEMA23ST2**  
For Use With:  
Heavy-Duty Slide 2, Page 74  
Narrow Profile Slide 2, Page 76  
Blueline 1 Belt Drive Slide, Page 78

(Includes: (4) M5 x 75mm Socket Head Screws) - **HX6100M05075**  
(Please make note this catalog number is for one bolt)



**NEMA 23 Frame**  
**HX4700MNEMA23-14**

For Use With:  
Gantry FB2, Page 64  
Z-Axis Slides, Page 66  
Bridge Mounted Slide, Page 70  
Standard-Duty Slide, Page 72  
(Includes: Circuit Board and Home Switch)



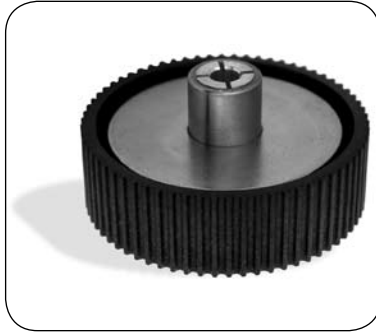
**COUPLINGS**

Shaft Coupling, jaw type with clamp hub, 1° Max. angular offset						
Catalog Number	Bore mm (in)	O.D. mm (in)	Length mm (in)	Maximum Parallel Offset mm (in)	Maximum Torque N · m (lbf · in)	
HL5500M3473	6.35 – 6.35 (.25 – .25)	25 (1)	30 (1.2)	0.20 (.008)	3 (26.6)	
HL5500M6380	6.35 – 8 (.25 – .31)	30 (1.2)	40 (1.6)	0.15 (.006)	7.5 (66.4)	
HL5500M6312	6.35 – 12 (.25 – .47)	40 (1.6)	60 (2.4)	0.1 (.004)	10 (88.5)	
HL5500M63127	6.35 – 12.7 (.25 – .50)	30 (1.2)	40 (1.6)	0.15 (.006)	7.5 (66.4)	
HL5500M0808	8 – 8 (.31 – .31)	30 (1.2)	40 (1.6)	0.15 (.006)	7.5 (66.4)	
HL5500M0809	8 – 9 (.31 – .35)	30 (1.2)	40 (1.6)	0.15 (.006)	7.5 (66.4)	
HL5500M0812	8 – 12 (.31 – .47)	30 (1.2)	40 (1.6)	0.15 (.006)	7.5 (66.4)	
HL5500M80127	8 – 12.7 (.31 – .50)	30 (1.2)	40 (1.6)	0.15 (.006)	7.5 (66.4)	
HL5500M0814	8 – 14 (.31 – .55)	40 (1.6)	60 (2.4)	0.1 (.004)	10 (88.5)	
HL5500M0819	8 – 19 (.31 – .74)	40 (1.6)	60 (2.4)	0.1 (.004)	10 (88.5)	
HL5500M1214	12 – 12 (.47 – .47)	40 (1.6)	60 (2.4)	0.1 (.004)	10 (88.5)	
HL5500M1212	12 – 12.7 (.47 – .50)	40 (1.6)	60 (2.4)	0.1 (.004)	10 (88.5)	
HL5500M1216	12 – 16 (.47 – .62)	40 (1.6)	60 (2.4)	0.1 (.004)	10 (88.5)	
HL5500M1219	12 – 19 (.47 – .74)	40 (1.6)	60 (2.4)	0.1 (.004)	10 (88.5)	
HL5500M127127	12.7 – 12.7 (.50 – .50)	40 (1.6)	60 (2.4)	0.1 (.004)	10 (88.5)	





**FRONT**



**BACK**

**INERTIAL DAMPERS**

The **Techno Inertial Damper** has been designed to provide smoother operation and stop loss of steps which may occur when stepper motors operate at resonance frequencies.

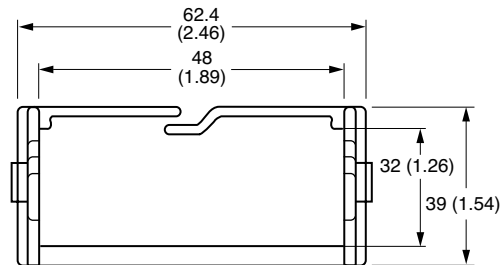
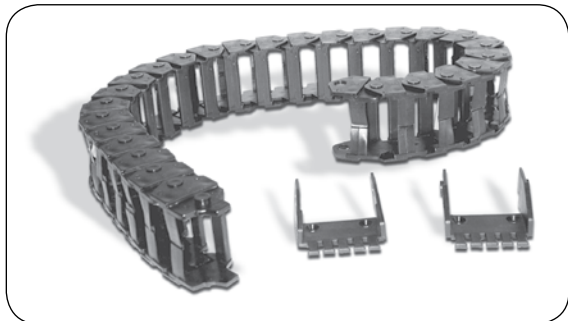
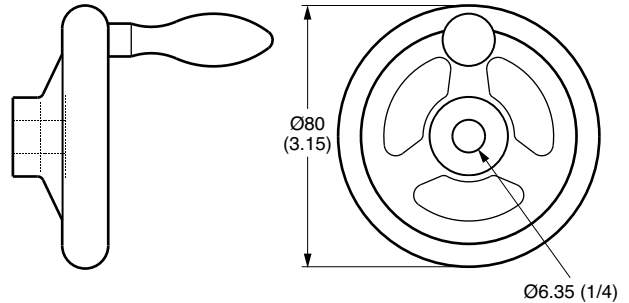
Catalog Number	Machines
H90Z12-17967	All except DaVinci
H90Z12-65A2902B	DaVinci only



**HANDWHEEL**

The **Handwheel** can be used to manually drive many of our ball screw and belt actuators.

**Catalog Number**  
**HL5500M3477**



**NOTE:** 0.79 (1/32) is maximum diameter of a single cable which can be used in this system.

**CABLE CARRIERS**

Catalog Number	Cable Carrier Kits
HX3500-CCKIT1	Cable Carrier Kit (Model 130)
HX3500-CCKIT2	Cable Carrier Kit (Models 027, 040, 054 and 067)
HX3500-CCKIT3	Cable Carrier Kit (Model 015)
HX3500-E164060	Cable Carrier, 1 Foot Length
HX3500-117412PZ	Cable Carrier End Brackets (Set of Two)

All kits include mounting brackets and flexible track.